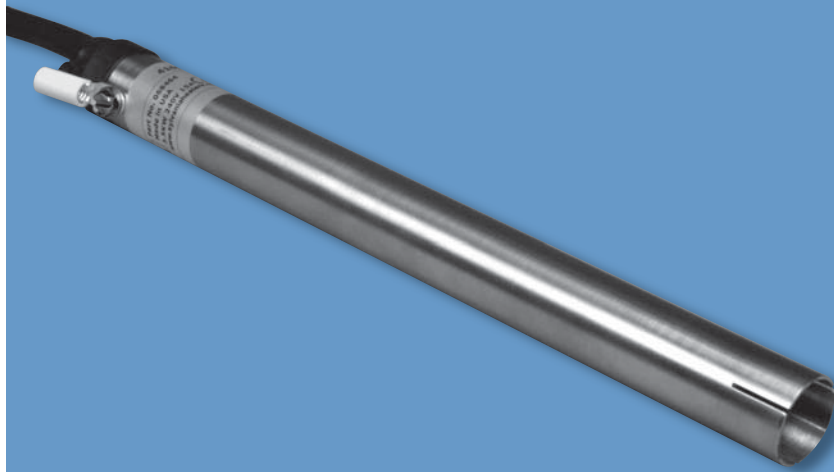


# Hot Air Tools

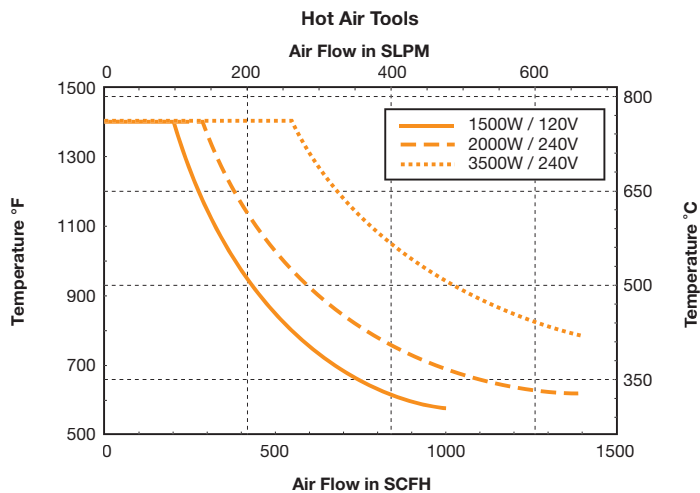


## Specifications

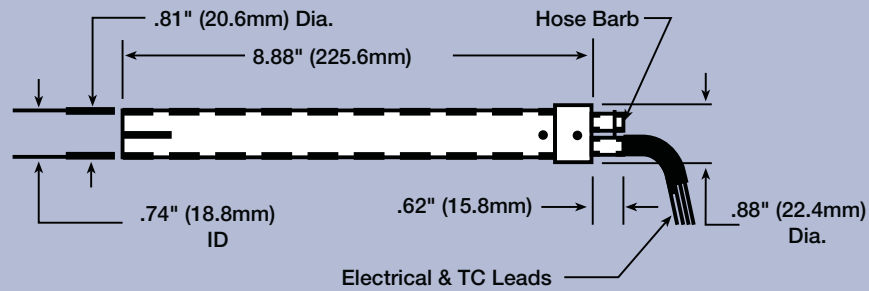
- Air temperature controllable to 1400°F (760°C)
- Built-in Type K thermocouple
- 1/4" hose barb air connection
- Maximum inlet temperature 120°F (49°C)
- Maximum air pressure 60 psi (4 bar)
- Slotted exit for flare attachment
- 304 stainless steel body
- 3' (914mm) power and thermocouple leads
- RoHS compliant



## Performance



## Installation

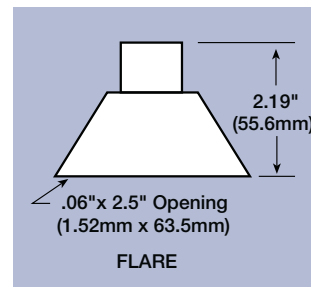


## Products

Part Number	Max. Watts	Max. Volts	Max. Amps	Min. Flow SCFH (SLPM)
068462	1500W	120	13	30 (14)
068463	2000W	240	9	70 (33)
068464	3500W	240	15	90 (43)

## Accessories

Part Number	Description
068472	Flare (includes clamp) .06" x 2.5" (1.52mm x 63.5mm) opening
057081	Open-loop (manual) power control 120-277V 25A
066823	Closed-loop power control, 30A, 240V, 4-20mA (used with 070429)
070429	Digital temperature control, 1/16 DIN (used with 066823), 4-20mA



057081



066823



070429