

SureHeat[®] MAX

Air Heater

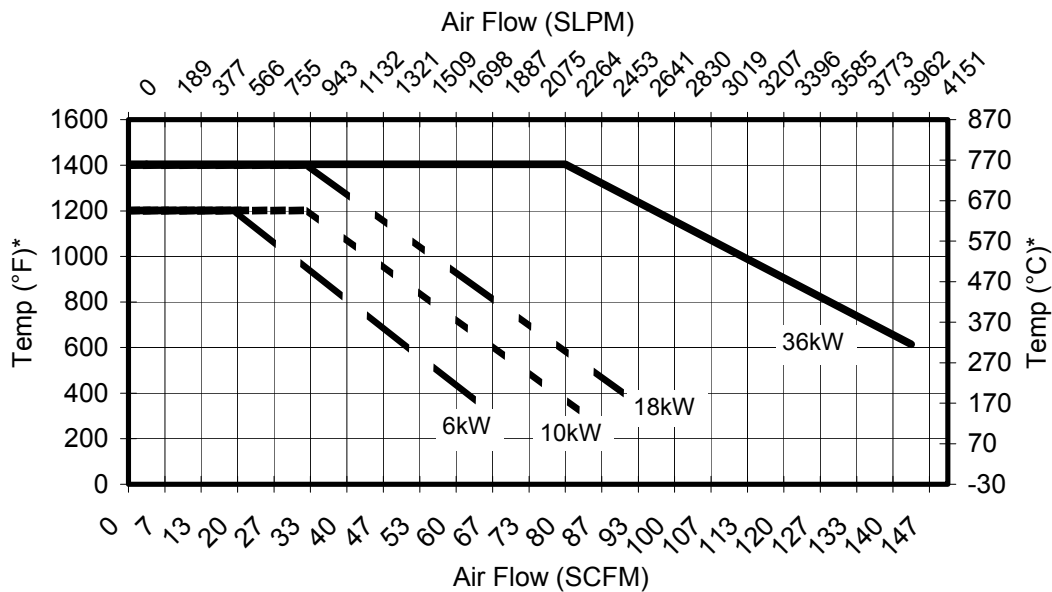
Specifications

- Precise, controlled hot air source for industrial applications, including sealing, drying, welding, sterilizing and soldering.
- Low backpressure design for blower installations.
- Air temp controllable to 1400°F (760°C) ±1°
- Power 6.0kW - 36.0kW 240/380/480V~ 1Φ/3Φ
- Two internal "K" TC sensors for control and safety:
 - S1 measures inlet temp.
 - S2 measures exit temp.
- Rapid heat-up and cool-down.
- Maximum air pressure 60 p.s.i. (4 bar)
- Safety approvals – CE, UL
- 'Ceramic-only' design for food packaging applications.
- Max inlet temp 200°F (93°C)



Performance

SureHeat[®] MAX Maximum Performance



* Temp as measured by internal "K" thermocouple.

OSRAM SYLVANIA- Process Heat
131 Portsmouth Avenue
Exeter, NH 03833 USA
Tel: 603-772-4331
Fax: 603-772-1072
www.sylvaniaheaters.com



Products

Part Number	Description	Max Watts	Max Volts	Max Amps
F074723	SureHeat MAX 6.0kW Heater	6.0kW	240V~ 1Φ 50/60 Hz	25.0
F074724	SureHeat MAX 6.0kW Heater	6.0kW	240V~ 3Φ 50/60 Hz	14.5
F074725	SureHeat MAX 6.0kW Heater	6.0kW	380V~ 3Φ 50/60 Hz	9.1
F074726	SureHeat MAX 6.0kW Heater	6.0kW	480V~ 3Φ 50/60 Hz	7.2
F074727	SureHeat MAX 10.0kW Heater	10.0kW	240V~ 1Φ 50/60 Hz	41.7
F074728	SureHeat MAX 10.0kW Heater	10.0kW	240V~ 3Φ 50/60 Hz	24.1
F074729	SureHeat MAX 10.0kW Heater	10.0kW	380V~ 3Φ 50/60 Hz	15.2
F074731	SureHeat MAX 10.0kW Heater	10.0kW	480V~ 3Φ 50/60 Hz	12.0
F074732	SureHeat MAX 18.0kW Heater	18.0kW	240V~ 3Φ 50/60 Hz	43.4
F074733	SureHeat MAX 18.0kW Heater	18.0kW <td 380V~ 3Φ 50/60 Hz	27.4	
F074734	SureHeat MAX 18.0kW Heater	18.0kW	480V~ 3Φ 50/60 Hz	21.7
F074735	SureHeat MAX 36.0kW Heater	36.0kW	380V~ 3Φ 50/60 Hz	54.8
F074736	SureHeat MAX 36.0kW Heater	36.0kW	480V~ 3Φ 50/60 Hz	43.4

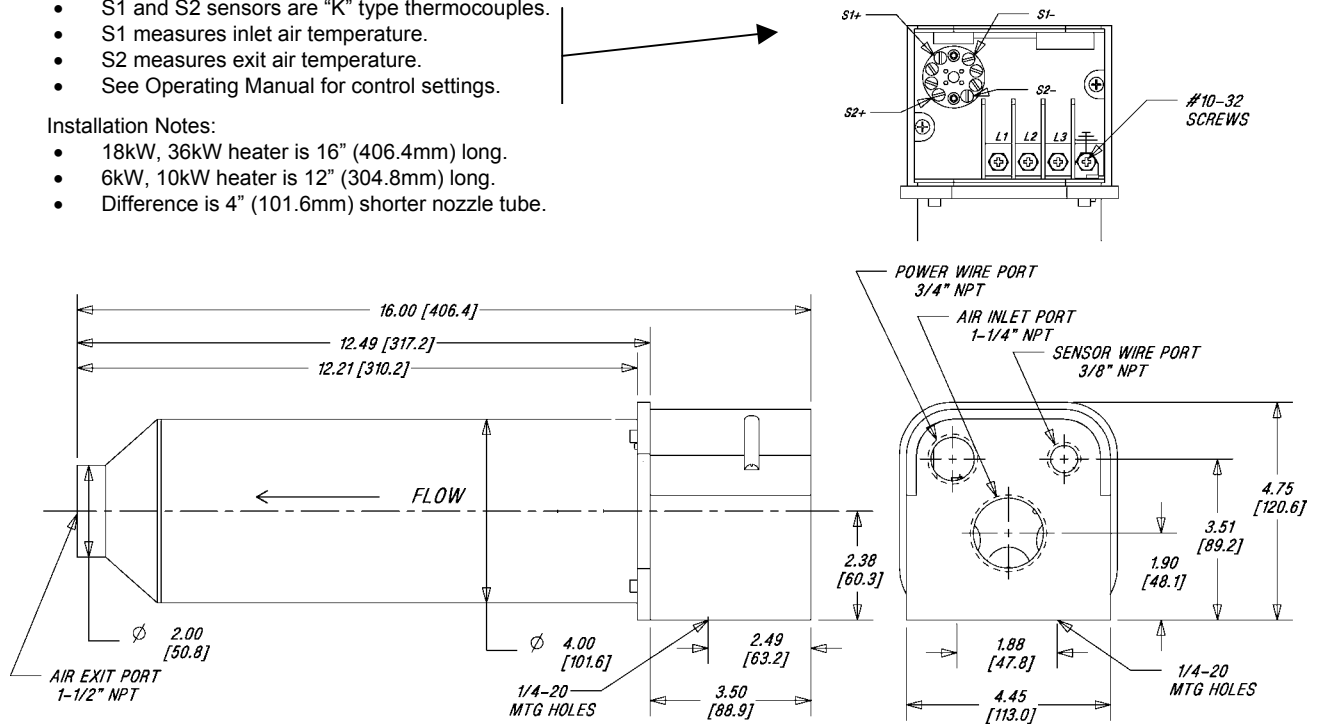
Installation

Wiring Notes:

- S1 and S2 sensors are "K" type thermocouples.
- S1 measures inlet air temperature.
- S2 measures exit air temperature.
- See Operating Manual for control settings.

Installation Notes:

- 18kW, 36kW heater is 16" (406.4mm) long.
- 6kW, 10kW heater is 12" (304.8mm) long.
- Difference is 4" (101.6mm) shorter nozzle tube.



All dimensions in inches [mm].

OSRAM SYLVANIA- Process Heat
 131 Portsmouth Avenue
 Exeter, NH 03833 USA
 Tel: 603-772-4331
 Fax: 603-772-1072
 www.sylvaniaheaters.com

