

LF SERIES

LIQUID FILLED ELECTRIC HYDRONIC HEATERS

- COMBINED BOILER AND RESERVOIR
- SIX MODELS - 23 VARIATIONS
- AUTOMATIC TEMPERATURES SHUTOFF
- INDIVIDUAL ROOM CONTROL
- MAXIMUM HEAT RETENTION
- LARGE WIRING COMPARTMENT

APPLICATIONS

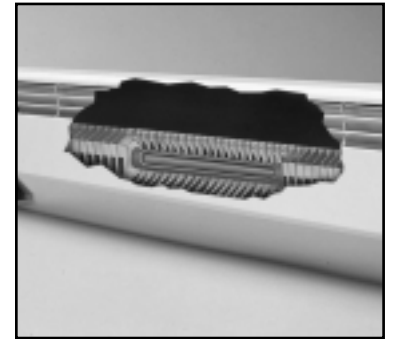
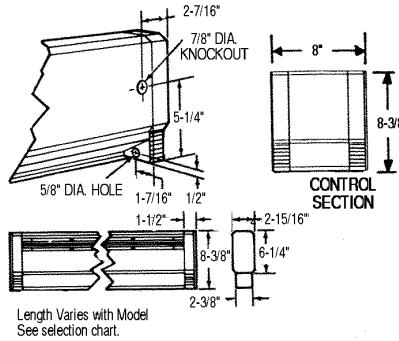
The LF Series Heaters are ideal whether for new home construction, remodeling or room additions. All it takes is simple mounting and the electrical hookup. No basement boiler. No duct work, chimney, pump or plumbing. Just clean, quiet, comfortable heat, when and where it's needed.

FEATURES

A sheathed electric heating element is totally immersed in a heat-transfer liquid and sealed in a heater-length copper tube. The large diameter reservoir maximizes the volume of heat storage fluid to prolong the thermal constant of the entire heater. All available heat is delivered into the room with strong convection flow. Gentle heat keeps radiating even after the thermostat turns off because of the hydronic element's retention qualities.

GO-ANYWHERE DESIGN. The entire unit mounts flush to any wall and flat on any floor - wood, carpet or tile. The trim, three-inch thick functional design and low operating temperatures allow carpeting to be installed up to and around the baseboard. Efficient air flow is achieved even if the unit is mounted above the floor.

QUALITY INSIDE AND OUT. Heavy duty welded steel louvered grilles discourage insertion of foreign objects and direct heat outward into the room. Designer-style junction boxes are made of high-strength Lexan® to resist scratches and wear marks. Corrosion resistant aluminum fins are pressure-fitted to copper tubing to assure rapid heat transfer and air flow. Built-in cut-off automatically shuts down heater should any overheating occur.



SELECTION CHART

CATALOG NUMBER	VOLTS	WATTS	BTU/HR	AMPS	APPROX. HTG. AREA	LENGTH (IN.)	SHIP WT. (LBS.)
LF500	120	500	1706	4.2	60S.F.	28	10
LF508	208	500	1706	2.4			
LF504	240/208	500/375	1706/1280	2.1/1.8			
LF750	120	750	2560	6.3	95 S.F.	34	12
LF758	208	750	2560	3.6			
LF754	240/208	750/563	2560/1921	3.1/2.7			
LF1000	120	1000	3413	8.3	125 S.F.	46	15
LF1008	208	1000	3413	4.8			
LF1004	240/208	1000/750	3413/2560	4.2/3.6			
LF1250	120	1250	4265	10.4	155 S.F.	58	19
LF1258	208	1250	4265	6.0			
LF1254	240/208	1250/938	4265/3200	5.2/4.5			
LF1500	120	1500	5120	12.5	185 S.F.	70	22
LF1508	208	1500	5120	7.2			
LF1504	240/208	1500/1125	5120/3839	6.3/5.4			
LF2008	208	2000	6826	9.6	250 S.F.	94	30
LF2004	240/208	2000/1500	6826/5120	8.3/7.2			

CATALOG NO.	DESCRIPTION
LFT1*	22Amp @ 120-240VAC 18Amp @ 277VAC Single Pole Thermostat Snap Action Type. Field Installed in Junction Box.
LFT2*	22Amp @ 120-240VAC 18Amp @ 277VAC Double Pole Thermostat Snap Action Type. Field Installed in Junction Box.
LFT1TP*	Same As Model LFT1 Except Tamperproof.
LFT2TP*	Same As Model LFT2 Except Tamperproof.
LFAC	Air Conditioner Outlet Section. 20Amp @ 208-240VAC.
LFDR	Duplex Receptacle Section. 15Amp @ 120VAC.
LFWS	8" Blank Wiring Section.

* Installs in junction box.



CATALOG NO.	DESCRIPTION
LFLVRO	Low Voltage Relay Control Section 25A @ 120VAC.
LFLVR8	Low Voltage Relay Control Section 25A @ 208VAC.
LFLVR4	Low Voltage Relay Control Section 25A @ 240VAC.
LFCD2	Two Pole Disconnect Switch Section.

Control Section 8" in length.

CAT. NO.	DESCRIPTION	LENGTH (IN.)	SHIP WT. (LBS.)
OBDCIC	Inside Corner Section	2	
OBDCOC	Outside Corner Section	2	
OBDBS2	2 Ft. Blank Section	6	
OBDBS3	3 Ft. Blank Section	8	
OBDBS4	4 Ft. Blank Section	11	
OBDBS5	5 Ft. Blank Section	14	
OBDBS6	6 Ft. Blank Section	16	
OBDBS8	8 Ft. Blank Section	22	

ARCHITECT'S AND ENGINEER'S SPECIFICATIONS*

Furnish and install, where indicated on plans, LF Series electric/hydronic convector type heaters suitable for continuous operation as manufactured by Berko, A Division of Marley Engineered Products, Bennettsville, SC. Units shall be Underwriter's Laboratories Listed and have a profile that is 2-15/16"D x 8-3/8"H and be available in lengths from 28" through 94".

ENCLOSURE - Shall be fabricated of heavy gauge cold-rolled steel with a built-in wireway and discharge grille. Both ends of the unit will consist of a Lexan® and cap/junction box. All field wiring will terminate in the Lexan® junction box.

HEATING ELEMENTS - Constructed of nickel chromium heating element wire, embedded in magnesium oxide, and

enclosed in a metal sheath for maximum strength and corrosion resistance. Aluminum fins shall be pressure bonded to the sheath.

OVER TEMPERATURE PROTECTION - An automatic reset thermal overhear protector shall run the length of the heater turning the unit off in the event an overheating situation should occur. The protector shall automatically reset after the unit has cooled down.

HEATING LENGTHS AND VOLTAGES - Heater lengths, voltages and wattages capacities shall be as indicated on the plans.

FINISH - All steel parts of th heaters and trim accessories shall be phosphatized and painted by a baked enamel painting

process. Color shall match the Lexan® and caps/junction boxes.

TRIM ACCESSORIES - Optional trim accessories to provide an attractive off-set fit shall be provided. These shall include inside corners, outside corners and blank sections.

CONTROL SECTIONS - Control sections, sized to match the units shall be furnished to house factory installed controls as specified.

OPTIONAL BUILT-IN CONTROLS
Thermostats shall be provided as specified.

*Berko reserves the right to change specifications without prior notice.

Distributed By:



A Division of Marley Engineered Products

470 Beauty Spot Road East
Bennettsville, SC 29512

Printed in the U.S.A.